



Public Relations Manager
ICHIKEN-kun

Male dog whose trademark is the ICHIKEN logo on his helmet.
He has a cheerful and energetic personality.
As the PR manager, he works hard every day to make everyone aware of ICHIKEN.



SDGs Promotion Section Chief
ICHINANA-chan

Female dog whose trademark is the ribbon around her ear.
She loves the color red and is particularly fond of her ear ribbon.
Kind, earnest and meticulous by nature, she is working hard to address a variety of issues as
SDGs Promotion Section Chief.

For Your Company Profile Living Space

ICHIKEN Co., Ltd. Company Profile



ICHIKEN Co., Ltd.

ICHIKEN Co., Ltd.
Shinagawa Intercity Tower A, 2-15-1,
Konan, Minato-ku, Tokyo 108-6015
Phone: +81-3-5931-5610
<https://www.ichiken.co.jp/en/>



Bringing the future to you through innovative living spaces

For Your Living Space

ICHIKEN is a general construction company providing a total range of services from basic conception, planning/development work, design/construction, to maintenance and renewal, all of which are conceived from the viewpoint of consumers.

This message represents our corporate stance of creating and proposing ideas for the future through our "living space" business, with the aim of realizing a comfortable and affluent society for our customers, business partners, local residents, employees and their families, and all stakeholders, and improving the satisfaction of employees.

Concept behind the puzzle

No two pieces of a jigsaw puzzle have the same shape. Carefully putting each piece together is similar to our work in architecture and manufacturing. The message expresses the care we take in our work, comparing the development and potential of combining products, the diversity of each product, and the way they are connected to each other, to a jigsaw puzzle.



TOP MESSAGE

From Our Founding in 1930 to the Future: An Unchanging Commitment and Ongoing Challenge



Since our founding in 1930, we have continued to move forward, focusing primarily on the construction of commercial facilities. Building on the knowledge and technical expertise we have cultivated over the years, it is our role and responsibility to continue creating and proposing "living spaces" that stand close to people and the future. Looking ahead, we will stabilize and strengthen our core construction business while strategically expanding into real estate and overseas operations to achieve continued growth. To do so, we believe it is essential for each and every employee to develop a deep understanding of the true nature of our customers' needs and to refine their ability to respond appropriately and effectively. With our partner companies, we will further reinforce partnerships built on trust, and we will strive to ensure that our stakeholders can truly experience and recognize our growth. We sincerely appreciate your continued support and encouragement.

Representative Director & President

Hiroaki Masakiyo

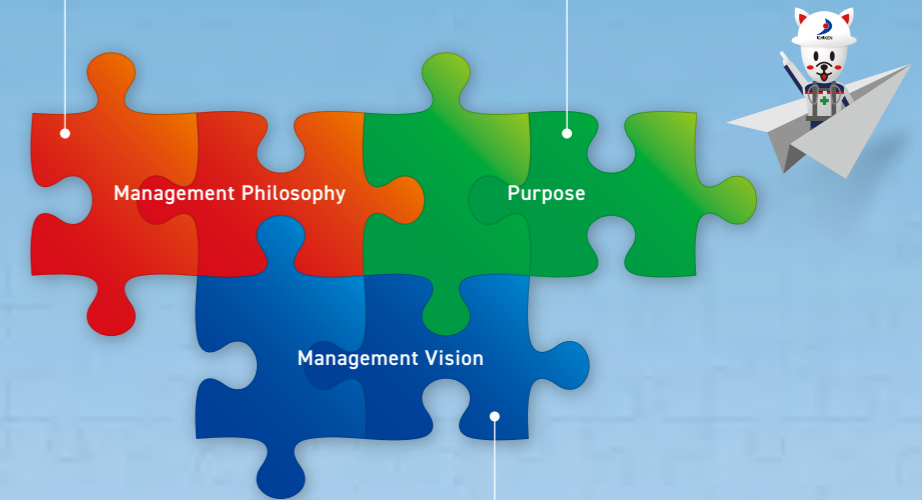
Management Philosophy

By striving to improve quality, ensuring thorough safety in construction, and always exercising creativity, ICHIKEN aims to materialize a comfortable and prosperous society through our commercial space business.

Purpose

To be a construction business operator that is capable of not only providing buildings that offer high customer satisfaction in terms of both quality and price but also considering the global environment for a sustainable society.

ICHIKEN
Corporate Philosophy



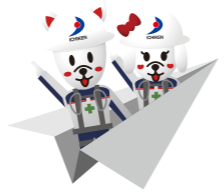
Management Vision

We aim to be a corporation that contributes to society through the creation of richly appointed and comfortable living spaces.



Responding to the needs of the times based on three strengths.

ICHIKEN values the cooperative relationship with our clients above all else, and based on an understanding of their needs and challenges, make optimal business proposals based on our extensive experience. Identification of issues based on location and business characteristics. We promise to increase client satisfaction through empathetic communication.



Experts in commercial-facility construction

In the course of constructing a variety of commercial facilities, we always approach construction from a user perspective. We give careful consideration to the good architectural space and satisfying services on offer from the point of view of the people who use the facilities. We provide optimal space creation that our clients demand.

As a general construction contractor, our focus is on commercial facilities!

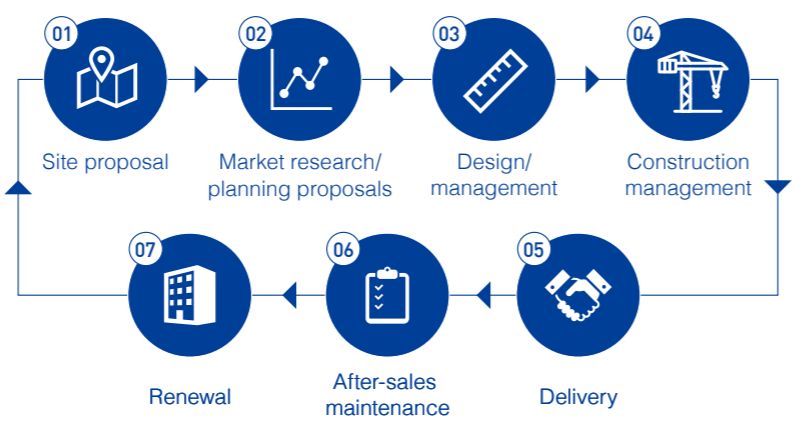
In the breakdown of construction facilities, commercial facilities account for approximately 70% of the total, and ICHIKEN is now the preferred name for commercial facilities.



Total coordination from design to construction

To create all operations related to space creation, from the basic concept to design/construction, with consistently high quality. This is our approach to our work. We respond to every challenge

based on the accumulated information, know-how, broad network and abundant experience and a thorough understanding of every aspect of our work. Quality and safety-first construction management, environmentally conscious technology, and attention to creating beautiful spaces. This is our stance as professionals in our field.

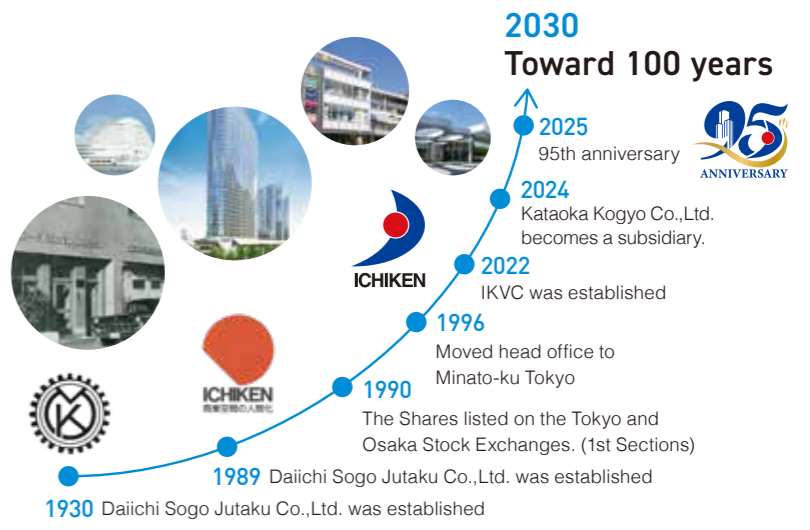


A company with a history of over 95 years

As experts in commercial-facility construction, we have helped create a variety of living spaces. Based on a diverse and abundant portfolio of successful projects and a thorough understanding of our processes and business, we respond to every challenge by putting the needs and benefits of our clients first. We have accumulated our unique know-how and technology by taking on the challenge of difficult construction projects while continuing to protect people's lives without compromising convenience and comfort.

Overseas business expansion

In April 2022, we established an overseas affiliate, ICHIKEN Vietnam Construction Co., Ltd. "IKVC." In addition to promoting project management services and design/construction services, we also began BIM (three-dimensional model) services.



Technology and solutions to meet every need

We operate a full-service business from design, management, construction to after-sales maintenance. With the organizational capabilities that make this possible, partnerships with business partners, and know-how in all aspects of construction technology, we handle a wide range of facilities, including commercial facilities, condominiums, and public facilities. In the course of constructing a variety of facilities, we always approach construction from a user perspective. We thoroughly think through "to be a construction business operator that is capable of not only providing buildings that offer high customer satisfaction for both quality and price but also considering the global environment for a sustainable society," which is also the purpose of ICHIKEN, and provide the optimal solution that required.



Productivity Improvement and the Utilization for New Value Creation



Visualization from planning and design to construction and management with 3D images

Utilization of BIM

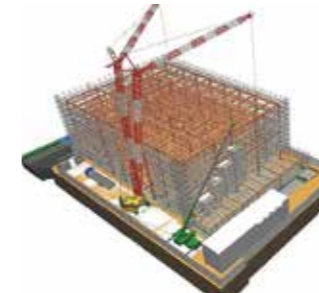


We began the full-scale implementation of BIM*1 in 2016. Using 3D conceptual drawings, we reach consensus with clients on shapes, finishing materials, lighting, etc. before starting work on site. We also check for conflicts between design, structure, and facility design work types and simulated construction, such as temporary work planning and steel frame erection. This helps realize easy process management by reducing rework on site and improves safety and quality control by visualizing the details of the construction.

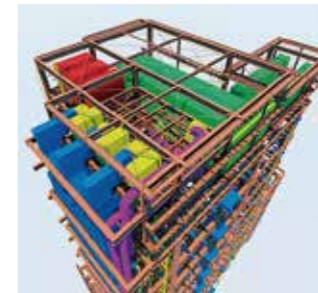
Design BIM



Production (construction) BIM



Integrated BIM



BIM modeling using a 3D scanner



*1:What is a Building Information Models (BIM)?

Building information models are created using computer-generated 3D information, together with building attribute information, such as the specifications, performance, and finish of each type of room, their area, materials and components, and the overall performance of the building.

Creating a Future for People and the Environment



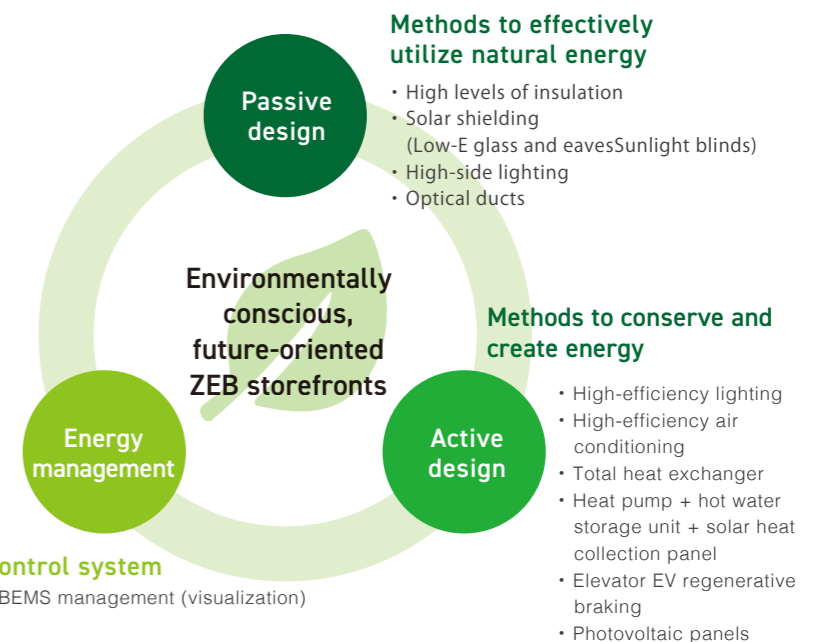
Environmentally Conscious and ZEB-enabled stores with a view to the futures

ZEB technology



Net Zero Energy Buildings (ZEBs) reduce energy consumption to a minimum and are self-sufficient thanks to energy creation. There have been calls for greater ZEB adoption in order to achieve CO₂ reduction targets, and customer interest in them has been increasing as well.

We, too, are promoting eco-friendly energy-saving construction efforts to realize energy conservation and energy creation in various ways, including the reduction of environmental impact, resource conservation, and energy conservation.



*2:What is a Net Zero Energy Building (ZEB)?

A building that achieves significant energy savings, while it maintains the quality of the indoor environment through the active use of natural energy, with the introduction of highly effective equipment and systems and of renewable energy to increase energy independence where possible, has the goal of achieving a "zero" annual primary energy consumption balance.

ICHIKEN Sustainability Management



SUSTAINABLE DEVELOPMENT GOALS

ICHIKEN supports the principles of the SDGs and actively promotes initiatives for a sustainable society.



With the aim of realizing a sustainable society where everyone can reach their full potential, ICHIKEN promotes business activities that contribute to solving social issues through dialogue and co-creation with our stakeholders. In addition to strict compliance with laws and regulations and corporate ethics, we are also actively working to reduce the risk of activities that may have a negative impact on society and the environment. Through the ESG materiality initiative, a key priority for ESG management, we aim to minimize risk and maximize the value we provide, which will also contribute to improving our future financial performance and achieving the SDGs.

Conservation of biodiversity

Support for environmental conservation

Participation in environmental conservation initiatives



Strict adherence to pollution prevention

Environmental protection/management of hazardous substances, control of air and water pollution

Promotion of diversity

Securing a diverse workforce and environment

Increase in the rate of childcare leave taken (by gender)/increase in the number of female employees and mid-career hires who serve as managers/increase in the number of people with disabilities hired



Addressing climate change risks

Environmentally conscious architectural proposals

ZEB proposal/initiatives toward energy-efficient design



Endorsement of Task Force on Climate-related Financial Disclosures (TCFD) recommendations

In pursuit of sustainability, we have expressed our support for the TCFD recommendations and are conducting analyses in accordance with those recommendations.



Building a recycling-oriented society

Promotion of resource recycling (zero emissions)

Control and reduction of waste



Conservation of biodiversity

Addressing climate change risks

Building a recycling-oriented society

Fostering partnerships

Development of skilled workers and improvement of working conditions at partner companies

Introduction and promotion of construction career advancement systems/promotion of health and safety activities/declaration of partnership building



Strengthening corporate governance

Improving the functions of the Board of Directors

Promoting independence/diversity relating to the Board of Directors/conducting evaluations of the effectiveness of the Board of Directors

Promotion of compliance

Enforcing risk management/strengthening information security

Strengthening corporate governance

Cooperation with stakeholders

Enhancement of group governance

Strengthening of internal controls

Fostering partnerships

Strengthening business continuity

Cooperation with stakeholders

Active dialogue with investors

Continued implementation of IR activities/enhancement of English disclosure/early disclosure of securities reports/strengthening engagement with shareholders/management with an emphasis on capital costs and share price

Strengthening business continuity

Smooth business continuity in the event of a disaster

Implementation of training based on the Business Continuity Plan (BCP)

Promotion of operational efficiency

Promotion of operational efficiency

Use of IT/digital technologies

Promotion of digitalization at workspaces/Improving the efficiency of construction management operations through the use of BIM



Promotion of forward-looking technology development

Promotion of useful technological development through industry-academia collaboration, etc.

Improving job satisfaction (work-life balance)

Creating a healthy and safe work environment

Reduction in the number of overtime hours worked/increase in the rate of paid leave utilization/reduction in the turnover rate of employees with the company for less than three years/enhancement of individual and workplace engagement

Human resource development for sustainable business

Encouragement to acquire relevant national qualifications, etc./implementation of practical training programs

Support for professional sports

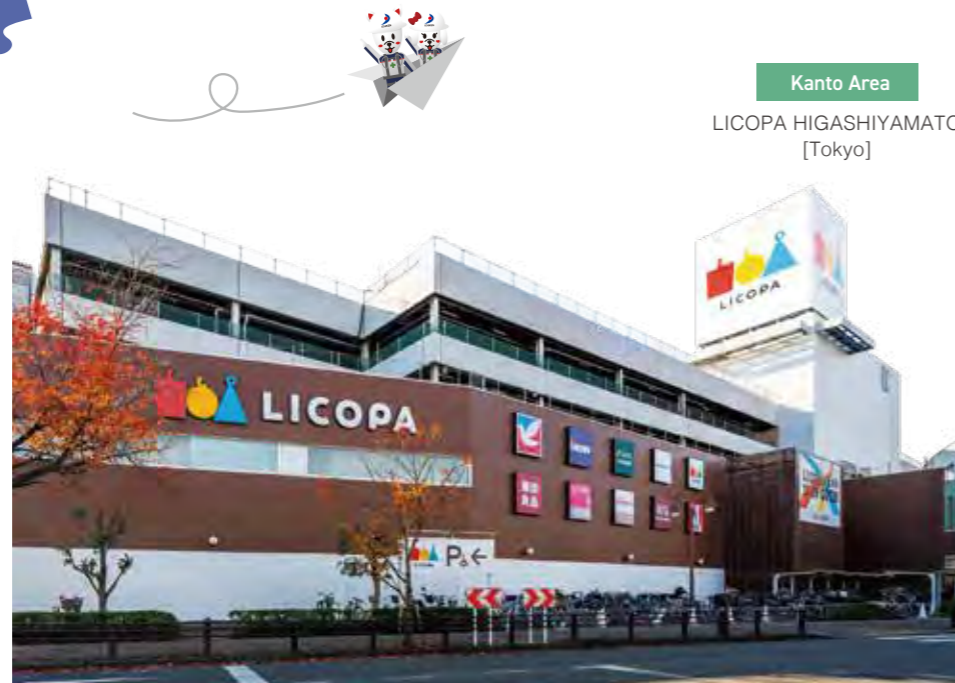
We promote diversity by supporting sports events.



Introduction of past works

Commercial facilities

To the symbol of a bustling and vibrant city. Flexible support for renewals.



Kanto Area
LICOPA HIGASHIYAMATO [Tokyo]



Kanto Area
BLANDE Misato [Saitama]

Introduction of past works

Supermarkets

A focus on convenience and the surrounding environment to create vibrant places where people of all ages will come together.



Hokkaido Area
Nitori Mutoran store [Hokkaido]



Tohoku Area
Ito Chain Yuriage Shokusaikan[Miyagi]



Kanto Area
i-Terrace ANNEX [Tokyo]



Kanto Area
CO-OP Kasukabe Terrace [Saitama]



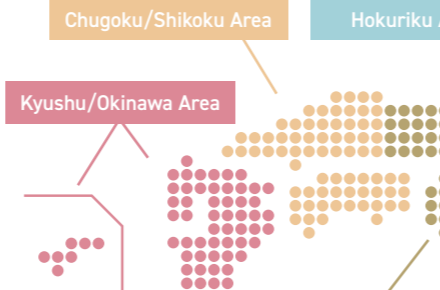
Kanto Area
BelX Kashiwa Omuro Store [Chiba]



Kanto Area
CROSS MUKOGAOKA [Kanagawa]



Kanto Area
VIERRA Maita [Kanagawa]



Kyushu/Okinawa Area
Gardens Chihaya [Fukuoka]



Kanto Area
LIFE Meguro Yakumo Store [Tokyo]



Kansai Area
OK Takaida Store [Osaka]



Kansai Area
MINOH Q's MALL STATION Building [Osaka]



Chugoku/Shikoku Area
CAINZ Hiroshima LECT Store [Hiroshima]



Kansai Area
Matsumoto Kameoka Higashi Store [Kyoto]



Kyushu/Okinawa Area
FCO-OP Kasuya Store [Fukuoka]



Kyushu/Okinawa Area
CO-OP Minami Kasuga Store [Oita]



Introduction of past works

Various facilities

Based on a solid perspective on marketability, they are finely attuned to the diverse lifestyles



Kyushu/Okinawa Area
NITORI Fukuoka DC [Fukuoka]

Introduction of past works

Residence, dormitory, etc.

Design that resonates with the sensibilities of residents, providing services and facilities for comfortable and secure living



Kanto Area
The Parkhouse Misato [Saitama]



Hokkaido Area
ONSEN RYOKAN YUEN SAPPORO [Hokkaido]



Kanto Area
APA Hotel (in front of Akabane-Iwabuchi Station) [Tokyo]



Kanto Area
Goodman Business Park "theGreen" [Chiba]



Hokkaido Area
Clare Homes Miyanosawa Avenue / Bloom [Hokkaido]



Kanto Area
SEASON FLATS RYOGOKU SOUTH [Tokyo]



Kanto Area
parknard Tsudanuma [Chiba]



Kanto Area
SHOWA NEON Co.,Ltd. Head Office [Tokyo]



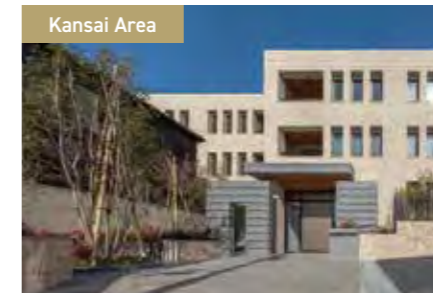
Chubu Area
Crown Package Co., Ltd. Nagoya Sales Office [Aichi]



Kansai Area
Eco Ring Co.,Ltd. Head Office [Hyogo]



Chubu Area
Roygent Hiyoshi II [Aichi]



Kansai Area
Granvi Okamoto [Hyogo]



Kansai Area
Daihatsu Track & Field Club Kureha Ryo [Osaka]



Kansai Area
Cosmo Beauty Kobe Factory [Hyogo]



Kansai Area
LOISIR HOTEL KYOTO TOJI [Kyoto]



Kyushu/Okinawa Area
KYUSYU SENKOLOGI Co.,Ltd. Tosu Logistics Center [Saga]



Chugoku/Shikoku Area
TRUST NEXUS IKUNOCHO [Yamaguchi]



Kyushu/Okinawa Area
URBAN PALACE HAKATA GROWSIDE [Fukuoka]



Kyushu/Okinawa Area
GRAND PALACE OYODOKAHAN [Miyazaki]

Introduction of past works

Medical welfare facilities

Focus on the local environment and landscape to create comfort and security




Introduction of past works

Public facilities

Business hubs that emphasize functionality, incorporate environmental measures, and accurately meets all needs




Library Izumi Chuo [Miyagi]



Kimitsu Chuo Hospital Amenity Building [Chiba]



Denmark INN Tsutsujigaoka [Tokyo]



Fudanotsuji Square [Tokyo]



Ground Self-Defense Force Camp Kisarazu Maintenance Site A [Chiba]



Special Nursing Home Higashiikebukuro Kuwanomien [Tokyo]



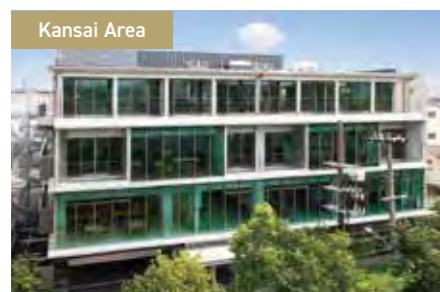
biima school kichijoji [Tokyo]



Lienre Nakanosakaue [Tokyo]



University of Marketing and Distribution Sciences / International exchange facility [Hyogo]



Jonai Rokushima Clinic [Hyogo]



Special Nursing Home Yagurumaen [Osaka]



National Hospital Organization Wakayama National Hospital [Wakayama]



Takatsuki City Imajozuka Museum of Ancient History [Osaka]



Light Motor Vehicle Inspection Organization Fukuoka main office [Fukuoka]

